

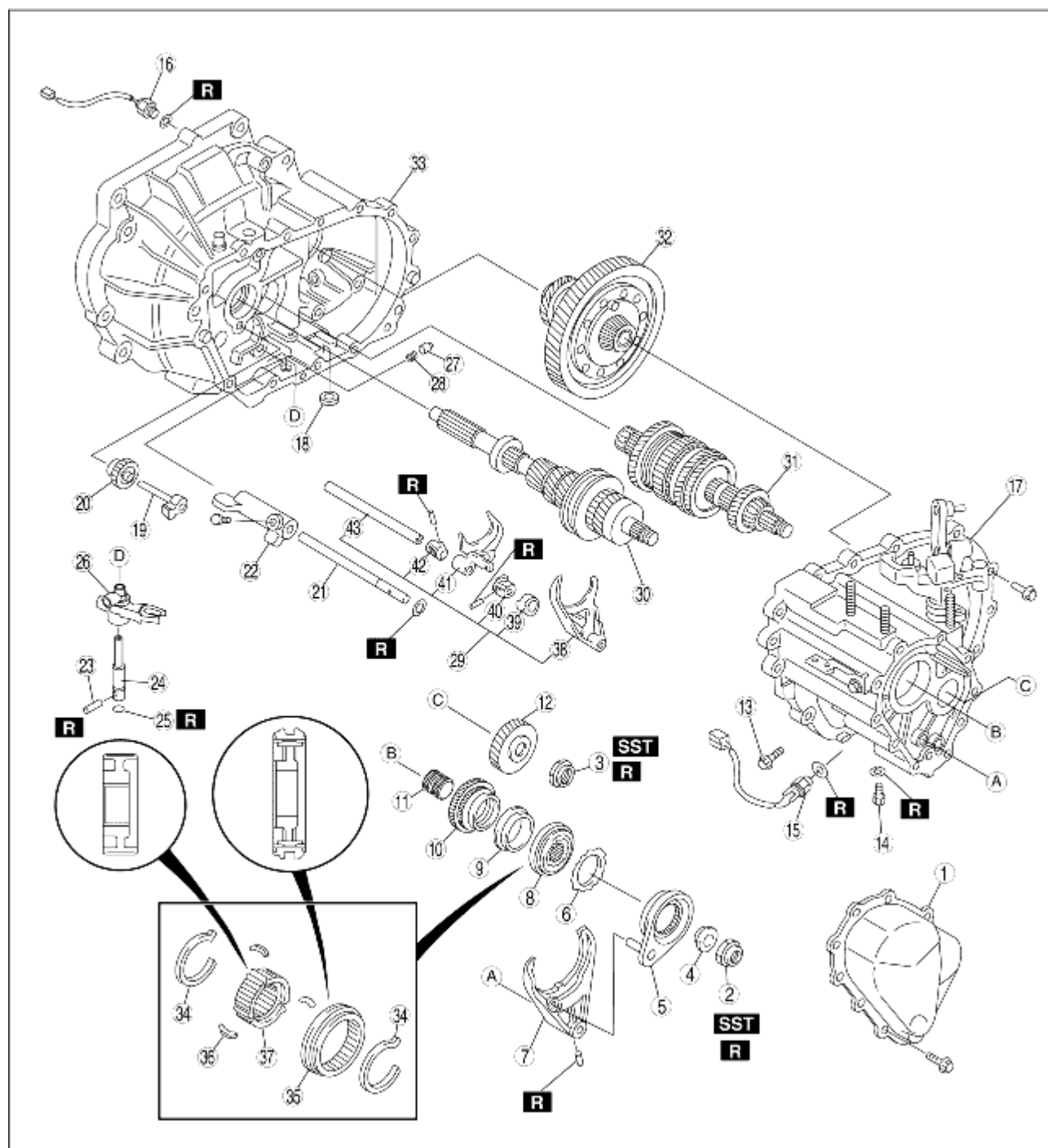
5TH/REVERSE GEAR AND HOUSING PARTS DISASSEMBLY

B3E051501029103

1. Disassemble in the order indicated in the table.

Caution

- If any old sealant gets into the transaxle during installation of the transaxle case, a malfunction may occur in the transaxle. Remove any old sealant from the transaxle case and clutch housing, and clean with cleaning fluids.



B2E051M101

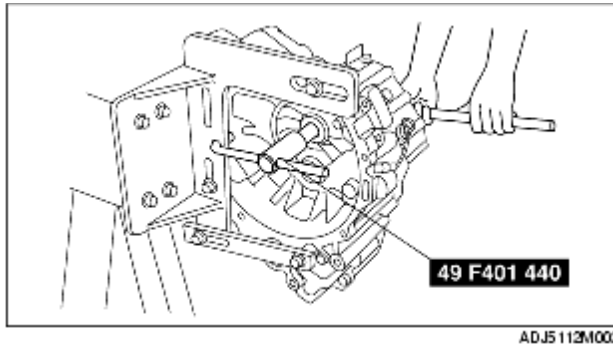
1	Rear cover
2	Locknut (primary shaft) (See Locknut Disassembly Note.)
3	Locknut (secondary shaft) (See Locknut Disassembly Note.)
4	Reverse synchronizer gear sleeve
5	Primary reverse synchronizer cone
6	Reverse synchronizer ring
7	5th/Reverse shift fork
8	5th/Reverse clutch hub component
9	5th synchronizer ring

10	5th primary gear
11	Gear sleeve
12	Secondary 5th gear
13	Lock bolt
14	Guide bolt
15	Back-up light switch
16	Neutral switch
17	Transaxle case component
18	Magnet
19	Reverse idle gear shaft
20	Reverse idle gear
21	5th/reverse shift rod
22	5th/reverse shift rod end
23	Pin
24	Crank lever shaft
25	O-ring
26	Crank lever component
27	Push pin component
28	Spring
29	Shift fork and control rod component (See Shift Fork and Control Rod Component Disassembly Note.)
30	Primary shaft gear component (See PRIMARY SHAFT COMPONENTS DISASSEMBLY.)
31	Secondary shaft gear component (See SECONDARY SHAFT COMPONENTS DISASSEMBLY.)
32	Differential component (See DIFFERENTIAL DISASSEMBLY.)
33	Clutch housing
34	Synchronizer key spring
35	5th/reverse Clutch hub sleeve
36	Synchronizer key
37	5th/reverse Clutch hub
38	3rd/4th shift fork
39	Interlock sleeve
40	Control lever
41	1st/2nd shift fork
42	Control end
43	Control rod

Locknut Disassembly Note

1. Assemble the **SSTs**.

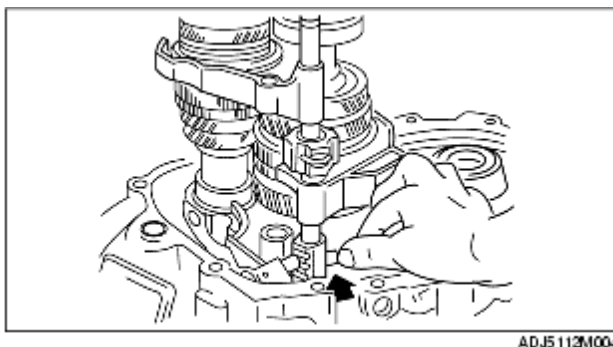
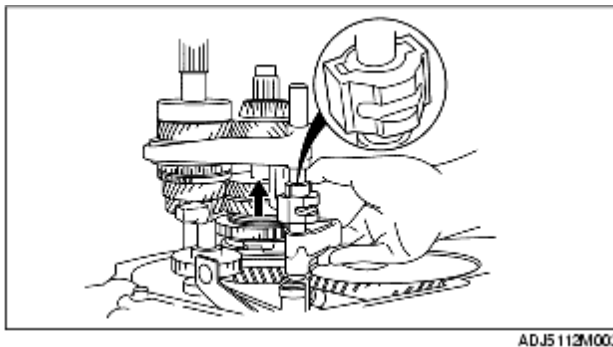
2. Lift the transaxle and mount it on the **SST**.
3. Lock the primary shaft with the **SST**.



4. Shift to 1st gear to lock the rotation of the primary shaft.
5. Bend back the caulking of locknuts using a chisel.
6. Remove the locknuts from the primary and secondary shafts.

Shift Fork and Control Rod Component Disassembly Note

1. Align the ends of the interlock sleeve and of the control lever (arrow). Turn the control rod counterclockwise.



2. While holding the 1st/2nd shift fork with one hand and the 3rd/4th shift fork with the other, raise them both at the same time and shift each of the clutch hub sleeves.
3. Lift the control end and remove the steel, and at the same time, remove the control rod from the clutch housing.

4. Separate the shift rod and shift fork component from each of the clutch hub sleeves.